



## Holly Mews Moor Lane

, Crosby, L23 2QZ

£795

We are pleased to offer Holly Mews, Moor Lane in Crosby for rent.

This charming Top floor apartment is perfect for those seeking a snug and easy-to-maintain home.

Private gated development. With off road parking.

The apartments benefit from a lift. Ideal location for Crosby Village and motorway links.

The property comprises of : A private balcony, 1 Bedroom, 1 bathroom. Lounge Kitchen with appliances.

Minimum term 6 Months  
Council Tax Band C  
Rent-£795 pcm excluding bills  
Deposit-£917  
Available Now

### Viewing

Please contact our Michael Moon Office on 0151 924 1000 if you wish to arrange a viewing appointment for this property or require further information.



1



1



1

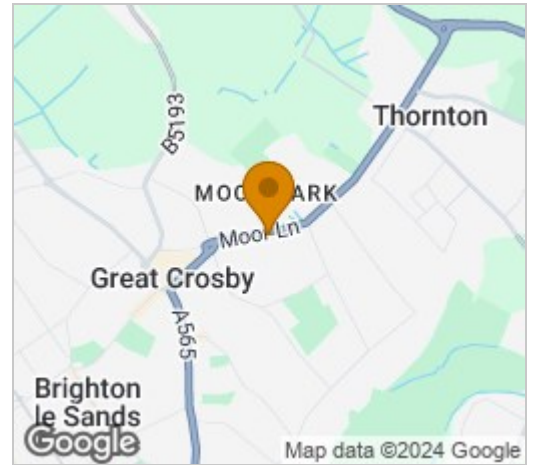


C

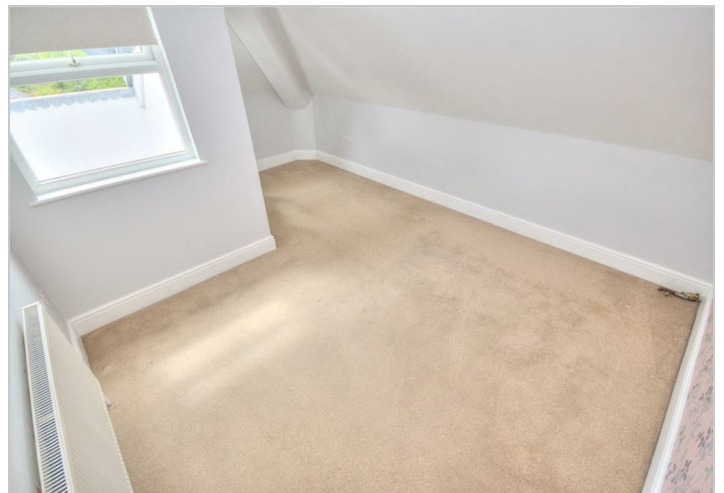
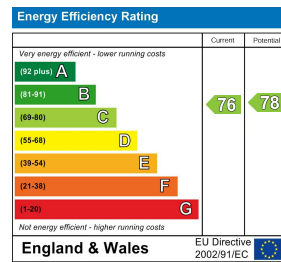
## Floor Plan



## Area Map



## Energy Efficiency Graph



These particulars, whilst believed to be accurate are set out as a general outline only for guidance and do not constitute any part of an offer or contract. Intending purchasers should not rely on them as statements of representation of fact, but must satisfy themselves by inspection or otherwise as to their accuracy. No person in this firm's employment has the authority to make or give any representation or warranty in respect of the property.