



## 13 Peel House Lime Grove

Seaforth, Liverpool, L21 3TZ

£695

Bluerow Homes are pleased to welcome to the market this two bedroom apartment nestled within a gated development in Seaforth.

The apartment briefly comprises of entrance hallway leading to open plan living and kitchen space, two double bedrooms, en suite shower room and additional family bathroom. Location wise the property couldn't be better placed giving convenient access to local shops, park and transport links.

Additionally, the convenience of allocated parking ensures hassle free parking.

Minimum 12 months

Council Tax band A

EPC C rating

- Gated development
- Allocated parking
- Well maintained communal gardens
- Chain free
- Great investment opportunity
- 2 bedrooms
- En - Suite shower room

### Viewing

Please contact our Michael Moon Office on 0151 924 1000 if you wish to arrange a viewing appointment for this property or require further information.



2



2

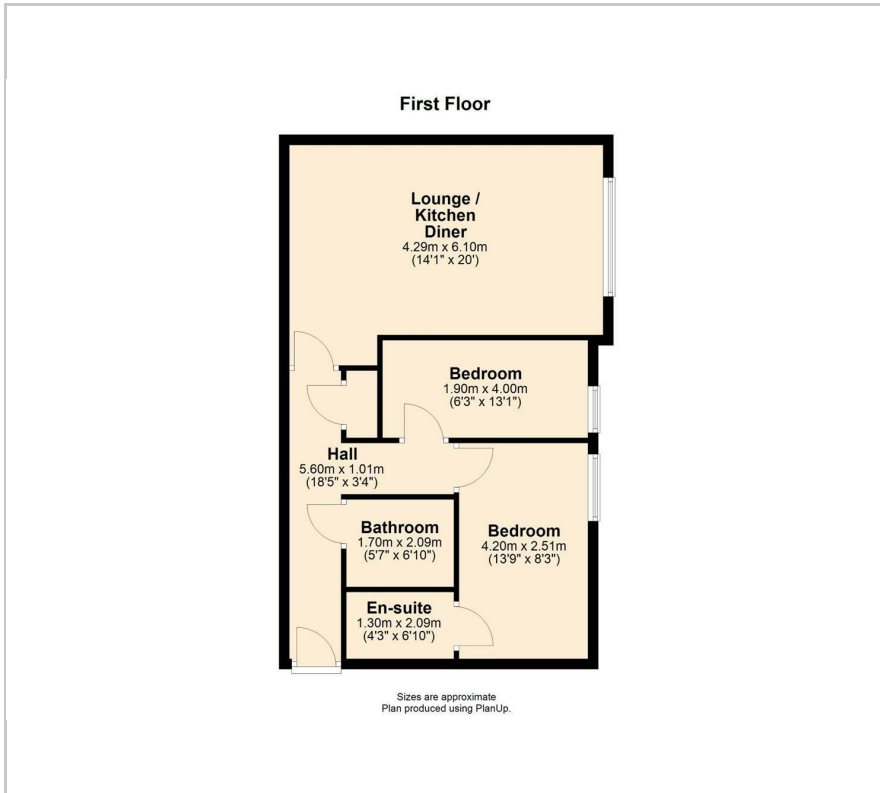


1



C

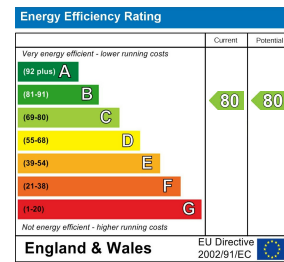
## Floor Plan



## Area Map



## Energy Efficiency Graph



These particulars, whilst believed to be accurate are set out as a general outline only for guidance and do not constitute any part of an offer or contract. Intending purchasers should not rely on them as statements of representation of fact, but must satisfy themselves by inspection or otherwise as to their accuracy. No person in this firm's employment has the authority to make or give any representation or warranty in respect of the property.