



35 Park Terrace 98 Park Street

, Liverpool, L8 6AP

£790

We are pleased to present this contemporary one-bedroom apartment situated in the desirable City Terraces development on Park Street, Liverpool. Built in 2020, this purpose-built apartment offers a modern living experience within a vibrant urban setting.

The perfect pad for one. This apartment features a open-plan living room and kitchen, perfect for both relaxation and entertaining. The well-appointed double bedroom provides a comfortable retreat, with shower room plus an fabulous good size Balcony with lovely city view, adds to the overall appeal of the property.

This apartment comes furnished, ensuring a seamless move-in experience. With double glazing throughout, residents can enjoy a peaceful environment, complemented by efficient electric heating for year-round comfort.

Conveniently located, the property is within easy reach of a variety of amenities, including the nearby Tesco Extra superstore, making daily errands a breeze.

This modern apartment is ideal for one or a couple a stylish home in a thriving area of Liverpool. Don't miss the opportunity to make this delightful property your own.

Available Immediately
Council Tax Band A
EPC rating: D
Rent £790 pcm Excluding Bills

Viewing

Please contact our Michael Moon Office on 0151 924 1000 if you wish to arrange a viewing appointment for this property or require further information.



1



1



1



C

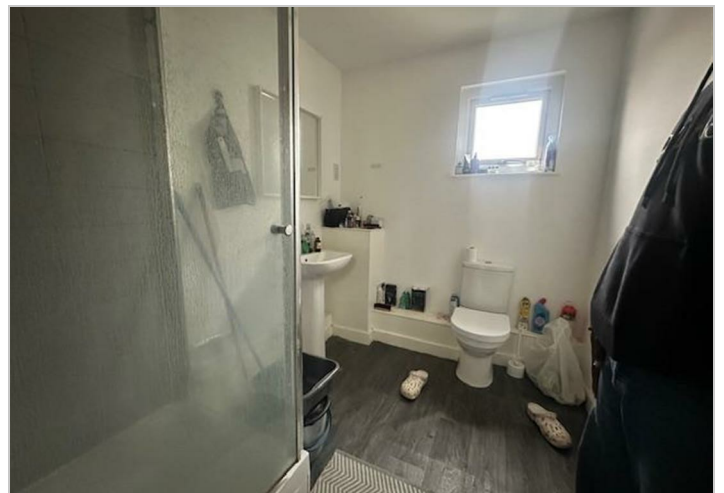
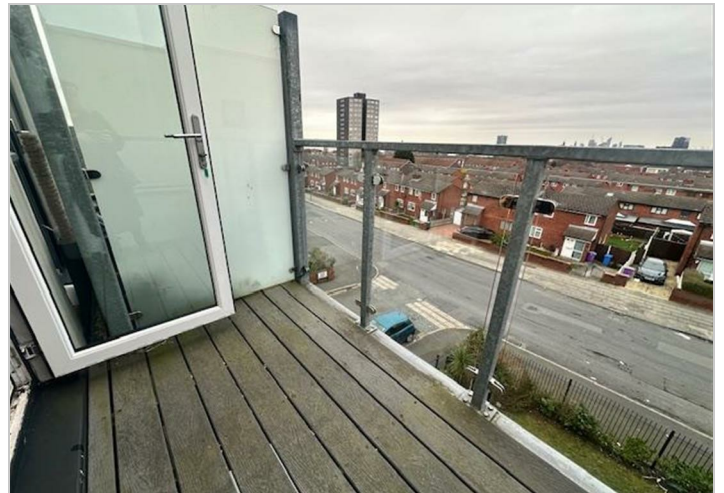
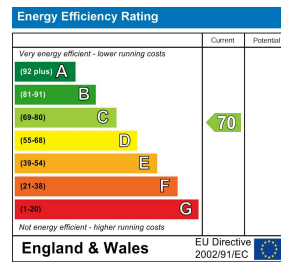
Floor Plan



Area Map



Energy Efficiency Graph



These particulars, whilst believed to be accurate are set out as a general outline only for guidance and do not constitute any part of an offer or contract. Intending purchasers should not rely on them as statements of representation of fact, but must satisfy themselves by inspection or otherwise as to their accuracy. No person in this firm's employment has the authority to make or give any representation or warranty in respect of the property.