



5 Shaftesbury Road

, Liverpool, L23 5RB

£1,200

Nestled in the heart of Crosby, this delightful mid-terrace house on Shaftesbury Road presents an ideal opportunity to rent a charming family home. The property boasts three well-proportioned bedrooms, providing ample space for a growing family or those wishing to accommodate guests.

Upon entering, you are welcomed into a bright and inviting through lounge, perfect for relaxation or entertaining. Kitchen with dining area is designed to foster a warm and sociable atmosphere during meal times.

The property is situated in a highly sought-after location, offering easy access to local amenities, schools, and parks, making it an excellent choice for families. The vibrant community of Crosby is known for its friendly atmosphere and convenient transport links, ensuring that you are well-connected to the wider Liverpool area.

With its tasteful decor and thoughtful layout, this three-bedroom semi-detached home is ready for you to move in and make it your own. Don't miss the chance to view this delightful home in a popular location.

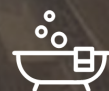
- Three Bedroom Mid-Terrace
- Unfurnished
- Through Lounge
- Overlooking Coronation Park
- Available Now
- On Street Parking
- Viewing Required

Viewing

Please contact our Michael Moon Office on 0151 924 1000 if you wish to arrange a viewing appointment for this property or require further information.



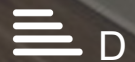
3



1



2

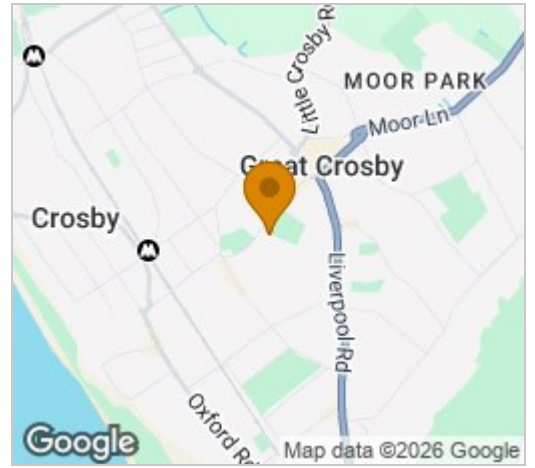


D

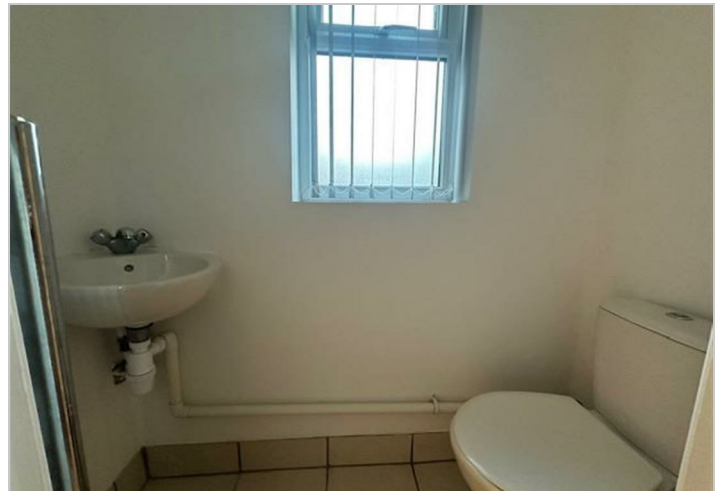
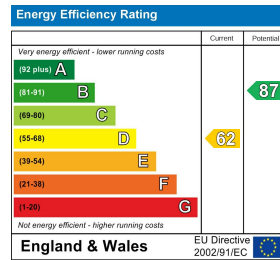
Floor Plan



Area Map



Energy Efficiency Graph



These particulars, whilst believed to be accurate are set out as a general outline only for guidance and do not constitute any part of an offer or contract. Intending purchasers should not rely on them as statements of representation of fact, but must satisfy themselves by inspection or otherwise as to their accuracy. No person in this firm's employment has the authority to make or give any representation or warranty in respect of the property.